

# URW-A295CR

(2.9t x 1.4m)



The **UNIC 295** is the first mini crawler available in Europe narrow enough to allow access through a standard doorframe, but with almost 3 tonnes of lifting power. It leads the way

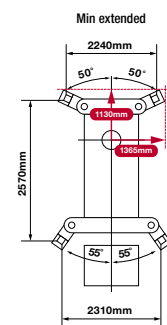
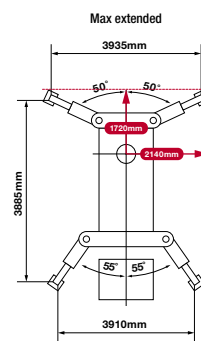
technically with an array of safety features including a computer-controlled, intelligent voice warning system.



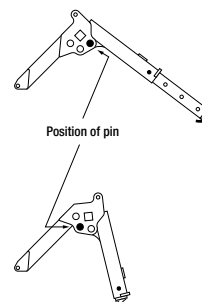
- Capacity 2.9t x 1.4m
- Total width 0.6m
- Max working radius 8.41m
- Max boom length 8.65m
- Petrol powered with optional mains electric and LPG
- Zero length increase with electric option
- Auto-throttle activation
- Operator control of outrigger extension
- Cable remote control (radio remote option)
- Working area limitation



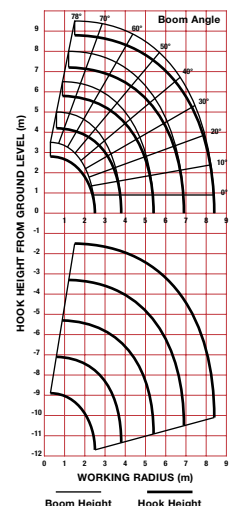
<b>Crane capacity</b>	capacity:	2.9t x 1.4m
<b>Max working radius</b>	max:	8.41m
<b>Max lifting height</b>	approx:	8.8m
<b>Rope length</b>	max:	11.7m (4 fall), 23.4m (2 fall), 46.8m (1 fall)
<b>Dimensions</b>	folded:	2690mm (l) x 600mm (w) x 1380mm (h)
<b>Weight</b>	unladen:	1850kg (1950kg with electric option)
<b>Point loadings</b>	Due to the many variables involved, point loadings are only available on request	
<b>Hook speed</b>	approx:	10m/min (with 4 layers and 4 falls)
<b>Telescopic system</b>	boom length:	2.53 - 8.65m
	telescoping speed:	6.12m/20 seconds
	boom type:	5 section hydraulically telescoping boom, hexagonal box construction
<b>Derricking angle/speed</b>	approx:	0 - 78°/11 seconds
<b>Slewing angle/speed</b>	approx:	360° (continuous) 1.5min <sup>-1</sup> (rpm)
<b>Traction system</b>	drive:	hydrostatic, step-less forward and reverse
	travel speed:	0 - 2.3km/h
	gradability:	20°
	track ground length:	1050mm
	track ground pressure:	48kPa (0.49kg/cm <sup>2</sup> )
	track width:	180mm
<b>Engine</b>	manufacturer:	Mitsubishi
	fuel:	petrol (LPG dual, electric dual and diesel options)
	maximum output:	9.6kW (13PS) / 2500min <sup>-1</sup> (rpm)
	starting method:	electric and recoil start as standard
	tank capacity:	6 litres
<b>Electric motor</b>	power:	3.7kW
	voltage:	400v AC 50/60Hz
<b>Standard equipment</b>	computer controlled moment limiter (safe load indicator), computer controlled intelligent voice warning system, overload warning lamps, cable remote control (9m)	
<b>Optional equipment</b>	2 fall hook block, 1 fall hook block, radio remote control, LPG dual power, mains electric dual power (400v), diesel engine, low marking tracks	



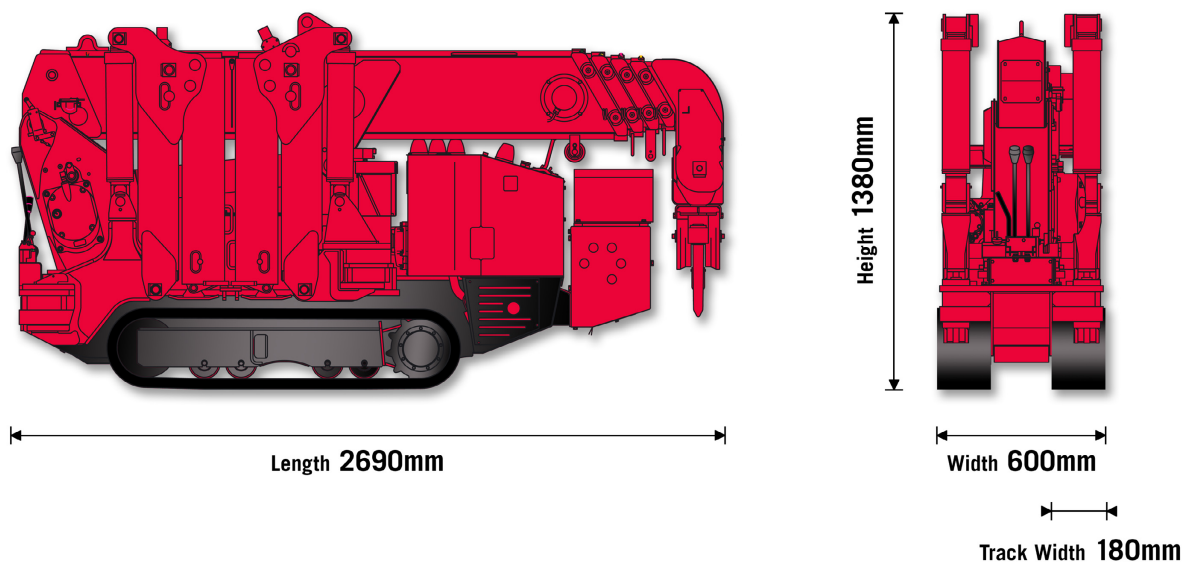
Outrigger setting with inner box extended to its maximum



Outrigger setting with inner box extended to its minimum



# CRANE ELEVATIONS



# RATED LOADS

## URW-A295CR

SECOND STAGE EXTENDED 2.53 - 4.075M BOOM LENGTH											
Working radius	m	up to 1.0	1.4	1.5	1.8	2.0	2.5	3.0	3.5	3.835	
Outrigger	Max-extended	kg	2,900	2,900	2,650	2,250	2,050	1,650	1,300	1,000	900
	Min-extended	kg	2,000	2,000	2,000	1,450	1,100	650	490	350	250

THIRD STAGE EXTENDED 4.075 - 5.61M BOOM LENGTH											
Working radius	m	up to 2.2	2.5	2.9	3.0	3.5	4.0	4.5	5.0	5.37	
Outrigger	Max-extended	kg	1,350	1,350	1,350	1,250	1,000	800	650	520	430
	Min-extended	kg	800	650	530	500	380	280	220	160	120

FOURTH STAGE EXTENDED 5.61 - 7.13M BOOM LENGTH											
Working radius	m	up to 3.3	3.8	4.0	4.5	5.0	5.5	6.0	6.5	6.89	
Outrigger	Max-extended	kg	850	850	750	600	500	420	360	320	270
	Min-extended	kg	420	340	300	250	190	140	100	80	60

FIFTH STAGE EXTENDED 7.13 - 8.65M BOOM LENGTH											
Working radius	m	up to 3.8	4.1	4.5	5.0	5.5	6.0	6.5	7.0	8.0	8.41
Outrigger	Max-extended	kg	550	550	450	370	310	270	230	200	150
	Min-extended	kg	350	290	250	200	160	130	100	70	40